

Year 5/6  
Curriculum  
Evening

# Curriculum coverage:

Maths:

Autumn 1- Place value, Addition/subtraction,  
Multiplication/division

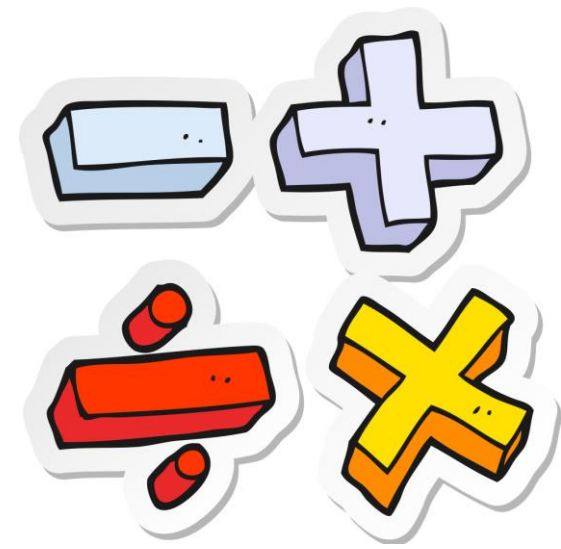
Autumn 2- Fractions, Multiplication/division

Spring 1- Fractions, Decimals, Area, perimeter and volume

Spring 2- Decimals, Fractions, Decimals and Percentages

Summer 1- Ratio, Algebra, Shape, Position and Direction

Summer 2- Statistics, Converting units



# Curriculum coverage:

English:



Narratives, recounts, non-chronological reports, discussion, persuasion, and explanations texts.

Statutory Year 5/6 spellings

Year 5/6 SPAG

Split assessment criteria.

# Curriculum coverage:

## Non-core topics:

Autumn 1- Industrious Victorians

Autumn 2- Industrious Victorians

Spring 1- WW2 the Battle for Britain

Spring 2- WW2 the Battle for Britain

Summer 1- Pushing Boundaries

Summer 2- Pushing Boundaries



# Curriculum coverage: RE

<u>Islam</u> What is the best way for a Muslim to show commitment to God?	<u>Christianity</u> How significant is it that Mary was Jesus' mother?	<u>Christianity</u> Is anything ever eternal?	<u>Christianity</u> Is Christianity still a strong religion over 2000 years after Jesus was on Earth?	<u>Islam</u> How is the Qur'an vital to Muslims today?	<u>Islam</u> Does belief in Akhirah (life after death) help Muslims to lead good lives?
--	---	--	--	---	--

# Curriculum coverage:

## Science:

Autumn 1- Electricity

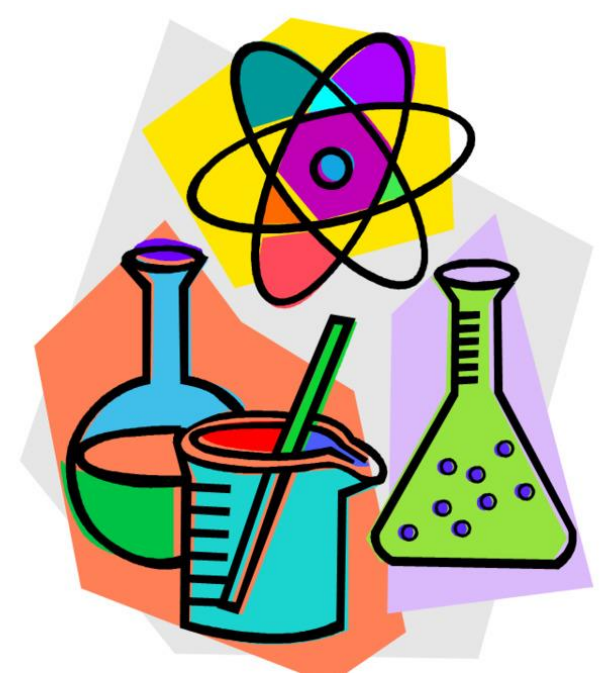
Autumn 2- Evolution and Inheritance

Spring 1- Properties and changes of materials

Spring 2 - Properties and changes of materials

Summer 1- Living things and their habitats

Summer 2- Evolution and Inheritance



# Curriculum coverage: PSHE

- Healthy Me
- Relationships
- Changing Me
- SRE

# SRE Curriculum:

*Use JIGSAW curriculum for SRE*

*Children split into year groups*

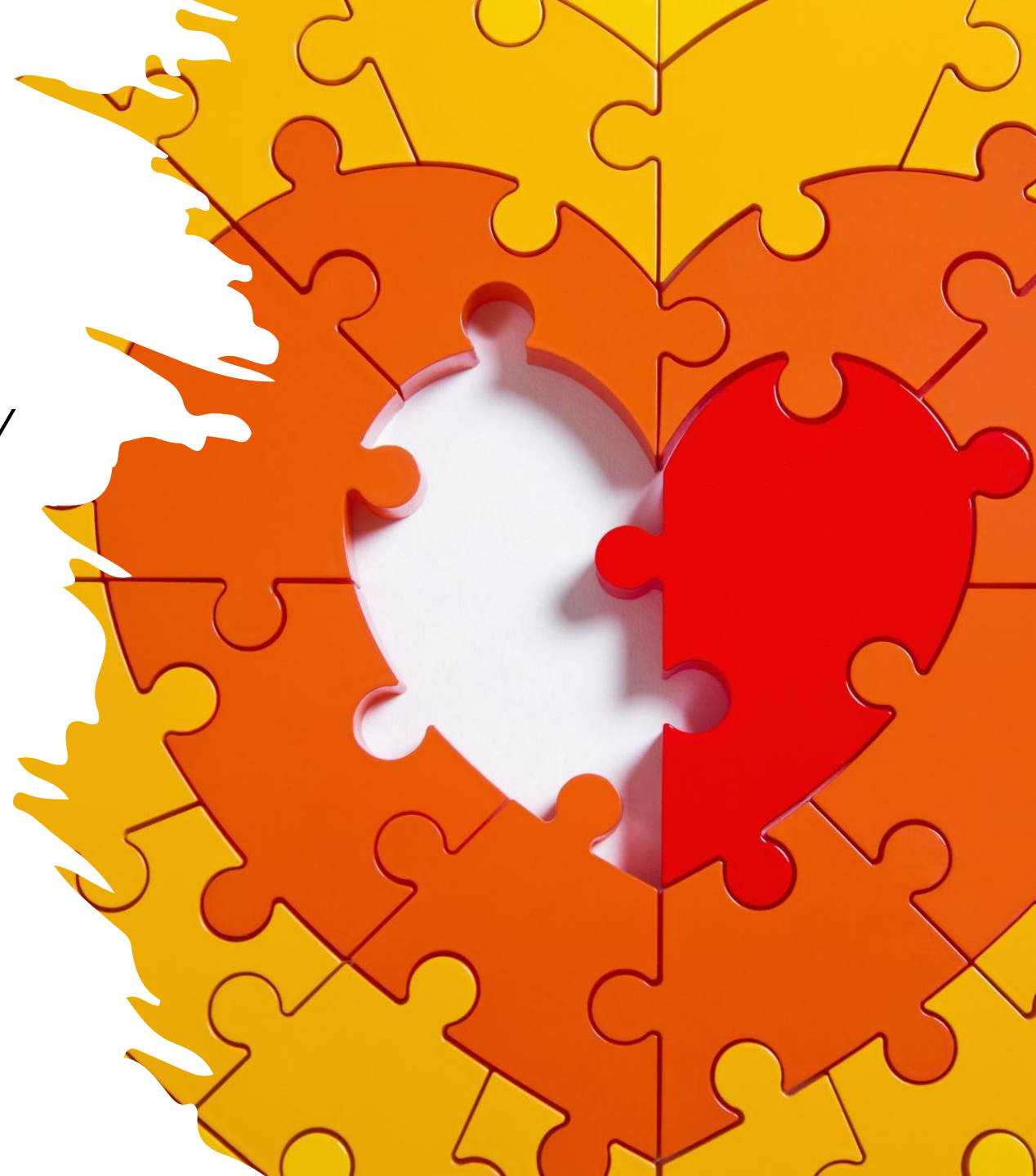
*Taught appropriate to age and maturity*

Y5

*Body image, puberty and conception  
(including IVF)*

Y6

*Body image, puberty, conception to  
births, respect and consent.*



# No Outsiders

*Assemblies*

*Book based sessions*

*Discussions/ activities*

*Restorative justice if any incidents occur*

*Emphasise on children having informed decisions- not a "right" way of thinking.*



# Reading- support at home:

- *Boom reader to record reading at home and school*
- *Children will have a graded schoolbook (assessments to be carried out week 15/9/25) and a reading for pleasure book (a book chosen for enjoyment. It may need support to be read at home as not linked to reading level)*

- **The more you read, the more the learn.**
- **The more you learn, the more you earn.**





# Homework:

- *Weekly homework pick and mix*
- *Range of tasks/ areas of curriculum*
- *Given out Friday/ return Wednesday.*
  
- *Please ask on Monday if support is required.*



# Uniform, swimming and PE

*Full school uniform daily.*

*Notify the office if there is an issue and we will help- small supply of 2<sup>nd</sup> hand uniform if needed. Let me or office know.*

*PE on Monday for T1. PE will be on a Wednesday from November.*

*Children will need full PE kit including footwear.*

*If unable to take part due to illness, please let the office know or send note. Any prolonged illnesses or health problems will need doctor's support.*

*Swimming: Wednesday term 1.*

*Children need appropriate swim wear and towel. Children arrive at school in swimwear or change before we go. We do not have extensive changing areas at school.*

# Online platforms:

*Spelling Shed with weekly games and activities.*

*TT Rockstars for times tables. (**all** children need to maintain their speed recall of tables)*

*MyEd for messages/ also use Twitter and Facebook for updates etc plus images of pupils busy at school.*



# Times tables:

*Children should have a complete knowledge of all multiplication facts to 12 x 12 by the end of Year 4*

*Essential for many areas of maths (fractions, decimals, multiplication and division of larger numbers, area and perimeter of shapes etc)*

*Times tables, although not covered in lesson, are used within the maths topics for Y5/6.*



# Healthy Lunches

*Fruit snack, balanced lunch,*

*water bottle, nut free school*

*Ensure school dinners are ordered in advance please. See office/ Mrs Bringeman*



# Reward system:

*Carrot rewards,*

*Children can achieve them for good work, positive attitude, helpfulness and school value.*

*Use the site to spend rewards and delivery will be to the classroom on specific dates.*

*Deductions if pupil has not met the expectations of the academy.*



# Home school agreement

*The children and the school work very hard at meeting our part of the home school agreement. Please try to complete your part to ensure we form the best possible team to support you and your child.*





# What's coming up at **FISHTOFT 25-26**



**EYFS - Sacrewell Farm**



**Y1 - Peterborough Museum**



**Y1/2/3/4 - The Collection Museum**

*As well as local trips...*

*Boston Library, Fishtoft Church & the Allotment*

**Y5/6 - Duxford Air Museum**



**Y4/5/6 - The Recycling Centre**